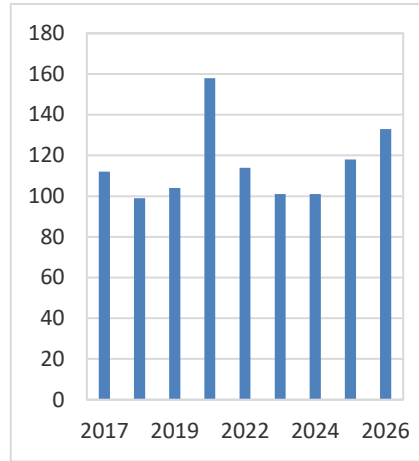
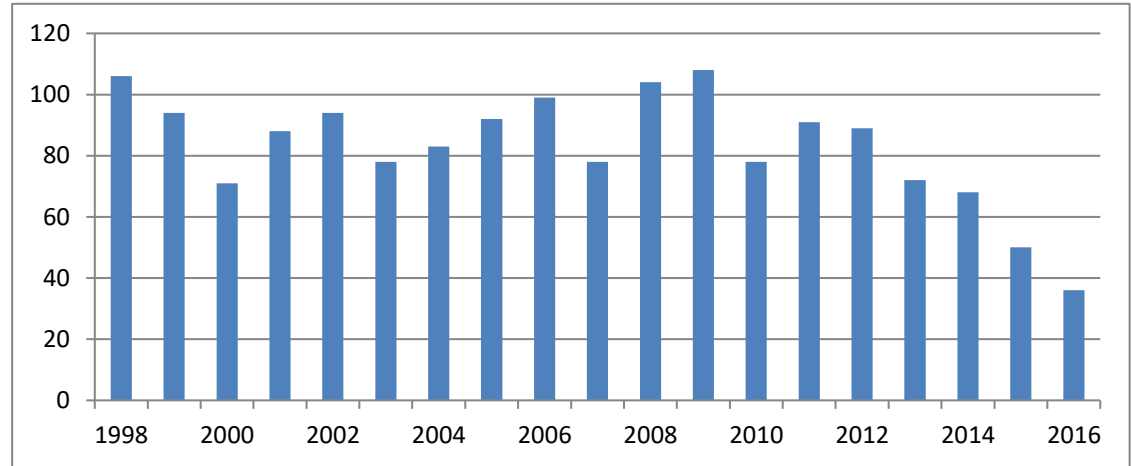


Race	Yr	Finished	DE-PA*	Members	% of DNP
Fireside					
Frostbite 5					
Miler	2017	1013	891	112	12.6%
	2018	867	835	99	11.9%
	2019	1054	1012	104	10.3%
	2020	1268	1207	158	13.1%
	2022	860	822	114	13.9%
	2023	794	758	101	13.3%
	2024	691	*n/a	101	*n/a
	2025	691	660	118	17.9%
	2026	844	798	133	16.7%

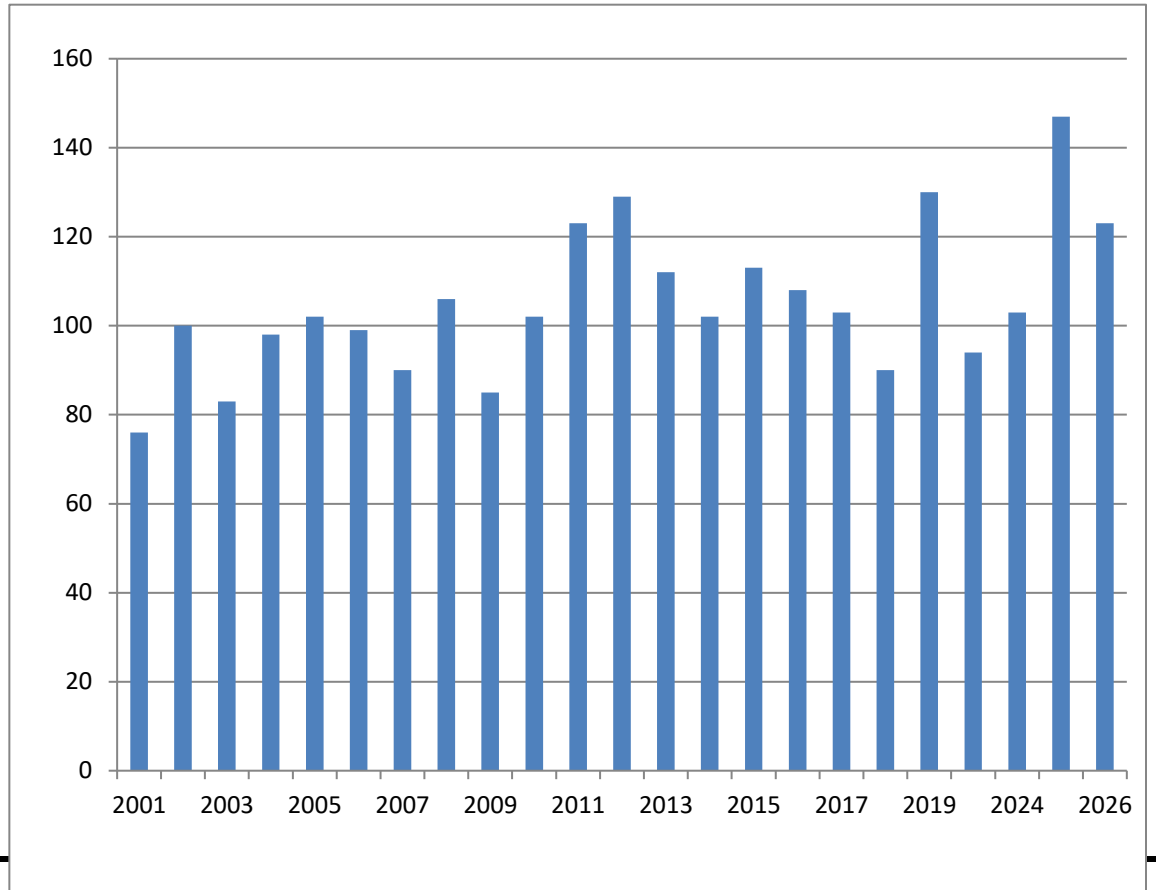
* Results not provided by city/state



Race	Yr	Finished	DE-PA*	Members	% of DNP
Caesar					
Rodney Half					
Mar. (since 1994)	1998	1010	899	106	11.8%
	1999	973	850	94	11.1%
	2000	1033	875	71	8.1%
	2001	1000	878	88	10.0%
	2002	1105	1011	94	9.3%
	2003	1035	913	78	8.5%
	2004	1170	1010	83	8.2%
	2005	1023	873	92	10.5%
	2006	1192	1002	99	9.9%
	2007	1186	979	78	8.0%
	2008	1231	1047	104	9.9%
	2009	1418	1173	108	9.2%
	2010	1496	1135	78	6.9%
	2011	1314	1069	91	8.5%
	2012	1406	1144	89	7.8%
	2013	1430	1191	72	6.0%
	2014	1119	942	68	7.2%
	2015	831	682	50	7.3%
	2016	612	513	36	7.0%



Bancroft Neurohealth 5K (2001-05)					
2001	616	575	76	13.2%	
2002	632	607	100	16.5%	
2003	610	594	83	14.0%	
2004	582	550	98	17.8%	
2005	590	166	102	61.4%	
Adrenaline 5K (since 2006)					
2006	468	115	99	86.1%	
2007	374	129	90	69.8%	
2008	623	190	106	55.8%	
2009	601	147	85	57.8%	
2010	724	165	102	61.8%	
2011	847	189	123	65.1%	
2012	922	203	129	63.5%	
2013	885	189	112	59.3%	
2014	916	188	102	54.3%	
2015	892	177	113	63.8%	
2016	922	178	108	60.7%	
2017	878	190	103	54.2%	
2018	942	179	90	50.3%	
2019	984	213	130	61.0%	
2023	726	174	94	54.0%	
2024	841	203	103	50.7%	
2025	784	244	147	60.2%	
2026	719	199	123	61.8%	

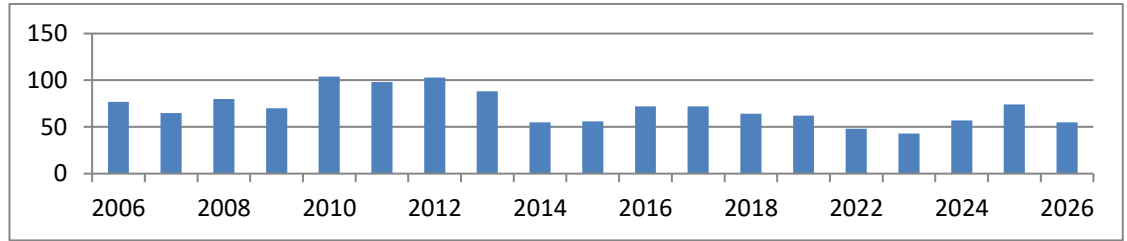


Penn Relays

20K	1998	421	399	88	22.1%
(1991-95, 97-03)	1999	441	425	89	20.9%
	2000	410	393	73	18.6%
	2001	405	384	90	23.4%
	2002	369	350	75	21.4%
	2003	274	264	68	25.8%

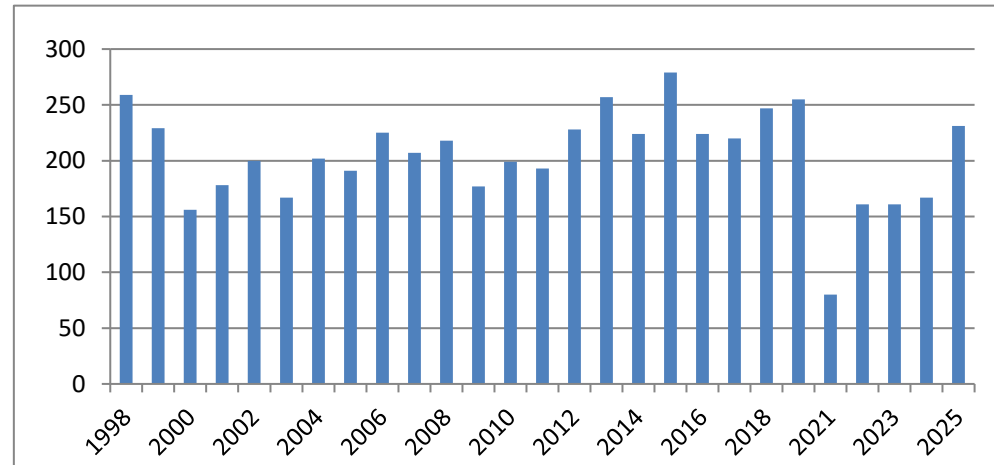
Valley Forge

Revolut. 5	2006	977	921	77	8.4%
miler	2007	921	858	65	7.6%
(since 2006)	2008	1074	999	80	8.0%
	2009	1067	1004	70	7.0%
	2010	1182	1127	104	9.2%
	2011	1163	1103	98	8.9%
	2012	1045	924	103	11.1%
	2013	943	882	88	10.0%
	2014	838	754	55	7.3%
	2015	814	763	56	7.3%
	2016	962	898	72	8.0%
	2017	978	913	72	7.9%
	2018	972	907	64	7.1%
	2019	945	887	62	7.0%
	2022	585	555	48	8.6%
	2023	844	761	43	5.7%
	2024	791	727	57	7.8%
	2025	889	835	74	8.9%
	2026	922	848	55	6.5%



**Broad Street
Run 10 miler
(since 1991)**

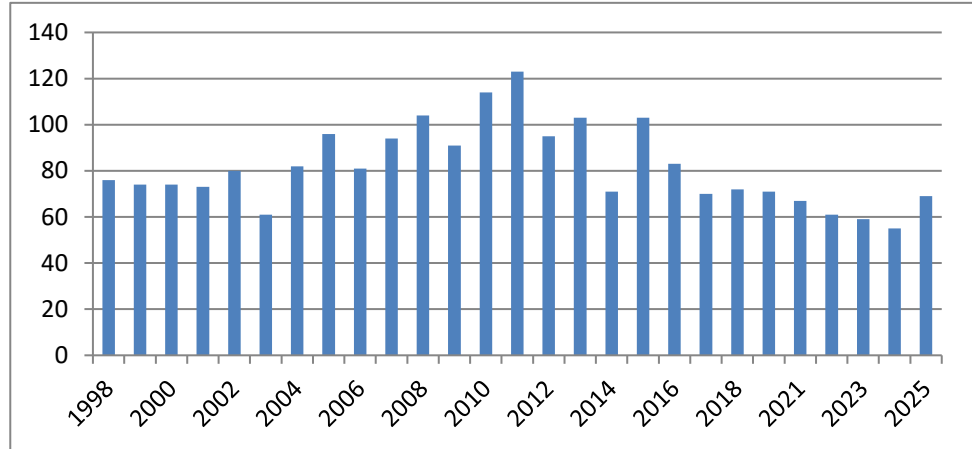
1998	5870	5433	259	4.8%
1999	6470	5989	229	3.8%
2000	6682	6108	156	2.6%
2001	7166	6611	178	2.7%
2002	8688	7902	200	2.5%
2003	9073	8188	167	2.0%
2004	10682	9555	202	2.1%
2005	12040	9233	191	2.1%
2006	13583	10419	225	2.2%
2007	15791	11979	207	1.7%
2008	19173	14613	218	1.5%
2009	23194	17490	177	1.0%
2010	26169	20093	199	1.0%
2011	25206	19482	193	1.0%
2012	34049	24507	228	0.9%
2013	32024	24695	257	1.0%
2014	35173	27088	224	0.8%
2015	35857	27598	279	1.0%
2016	34444	26236	224	0.9%
2017	36968	28163	220	0.8%
2018	36220	27800	247	0.9%
2019	34564	26319	255	1.0%
2021	11197	8829	80	0.9%
2022	20476	15559	161	1.0%
2023	28078	21278	161	0.8%
2024	31452	24074	167	0.7%
2025	33059	25156	231	0.9%



Phila. Bar 10K (91-98)	1998	546	528	81	15.3%
<hr/>					
Schuylkill River 5K (97-99)	1998	390	376	76	20.2%
	1999	234	231	68	29.4%
<hr/>					
Law Enforcement Unity 5K (01-03)	2001	479	468	47	10.0%
	2002	303	292	56	19.2%
	2003	358	344	44	12.8%
<hr/>					
Memorial Main Street Mile Since 2021	2021	175	161	49	30.4%
	2022	172	149	58	38.9%
	2023	182	157	59	37.6%
	2024	173	148	56	37.8%
	2025	196	181	71	39.2%

Moorestown

Rotary 8K (since 1995)	Year	2000	2025	Change	%
	1998	590	568	76	13.4%
	1999	620	609	74	12.2%
	2000	675	648	74	11.4%
	2001	491	472	73	15.5%
	2002	655	627	80	12.8%
	2003	562	534	61	11.4%
	2004	510	495	82	16.6%
	2005	571	155	96	61.9%
	2006	608	141	81	57.4%
	2007	651	152	94	61.8%
	2008	732	167	104	62.3%
	2009	777	220	91	41.4%
	2010	821	220	114	51.8%
	2011	848	218	123	56.4%
	2012	868	196	95	48.5%
	2013	872	187	103	55.1%
	2014	734	140	71	50.7%
	2015	835	174	103	59.2%
	2016	828	176	83	47.2%
	2017	827	136	70	51.5%
	2018	788	156	72	46.2%
	2019	691	140	71	50.7%
	2021	421	110	67	60.9%
	2022	447	103	61	59.2%
	2023	488	97	59	60.8%
	2024	509	93	55	59.1%
	2025	499	99	69	69.7%



Red Rose

Run 5 Mile	Year	2024	2025	Change	%
	2024	807	699	17	2.4%
	2025	979	*	18	

* Not provided results by city/state

St Anthony's

5K	Year	2000	2025	Change	%
	2000	258	224	37	16.5%
Capitol 5000	2002	224	217	37	17.1%
	2003	255	248	36	14.5%

Stone Harbor

Lions 10K	1999	1001	860	67	7.8%
(since 1999)	2000	1039	933	48	5.1%
	2001	745	687	59	8.6%
	2002	548	453	63	13.9%
	2003	556	483	54	11.2%
	2004	475	390	64	16.4%
	2005	439	245	79	32.2%
	2006	304	178	58	32.6%
	2007	337	163	61	37.4%
	2008	304	170	62	36.5%
	2009	333	199	70	35.2%

Hands-On-House Half Marathon	2017	209	185	23	12.4%
-------------------------------------	------	-----	-----	----	-------

Main Line Run 5K					
(since 2018)	2018	280	135	64	47.4%
	2019	301	U/A*	64	U/A*
	2021	225	U/A**	38	U/A**
	2022	189	U/A**	47	U/A**
	2023	131	125	40	32.0%
	2024	192	184	38	20.7%
	2025	165	160	52	32.5%

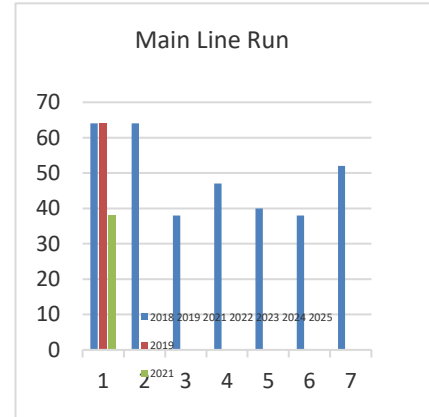
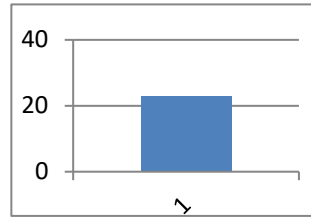
* Not provided results by city/state

** Not provided results entirely by city/state

Phila. Distance Run

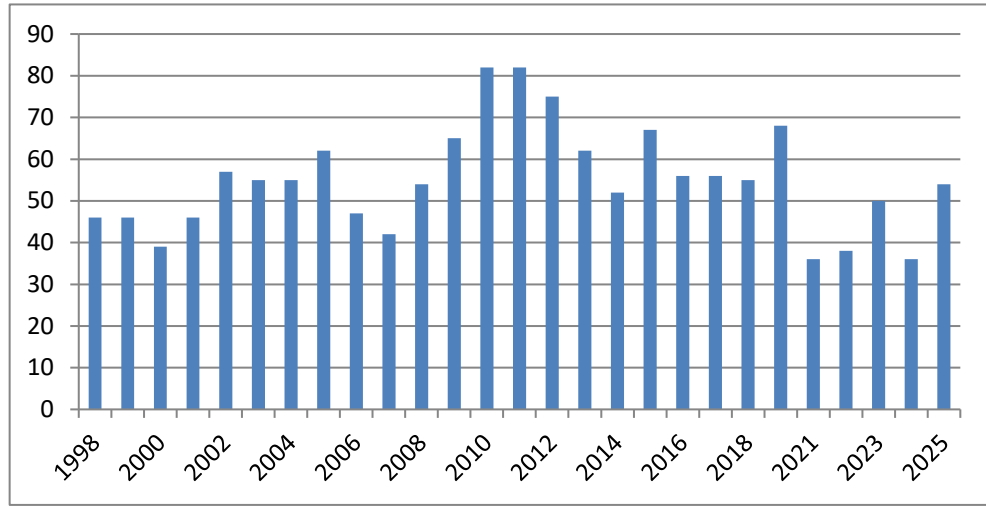
HMar	1998	6247	4706	482	10.2%
(1991-2000)	1999	6312	4867	228	4.7%
	2000	6416	4918	160	3.3%
	2021	2015	1443	73	5.1%
	2022	2674	1781	72	4.0%
	2023	2395	1714	63	3.7%
	2024	3045	2042	56	2.7%
	2025	3752	2423	82	3.4%

Parkway Run 5K	2002	742	719	69	9.6%
	2004	927	886	68	7.7%
	2005	1202	958	90	9.4%
	2006	1199	1007	77	7.6%



**Del. Distance
Classic 15K
(91-93, since
1997)**

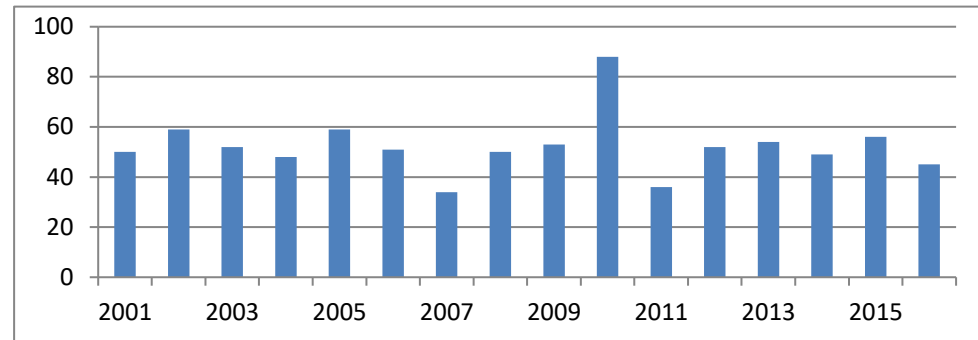
1998	132	125	46	36.8%
1999	164	150	46	30.7%
2000	198	185	39	21.1%
2001	223	194	46	23.7%
2002	252	229	57	24.9%
2003	238	226	55	24.3%
2004	282	262	55	21.0%
2005	239	205	62	30.2%
2006	236	212	47	22.2%
2007	181	160	42	26.3%
2008	248	218	54	24.8%
2009	268	227	65	28.6%
2010	297	264	82	31.1%
2011	348	???	82	
2012	355	315	75	23.8%
2013	330	291	62	21.3%
2014	273	258	52	20.2%
2015	265	223	67	30.0%
2016	175	160	56	35.0%
2017	191	175	56	32.0%
2018	168	148	55	37.2%
2019	225	189	68	36.0%
2021	140	125	36	28.8%
2022	133	111	38	34.2%
2023	189	168	50	29.8%
2024	178	165	36	21.8%
2025	165	149	54	36.2%



**Radnor Run
5 Miles
(since 2002)**

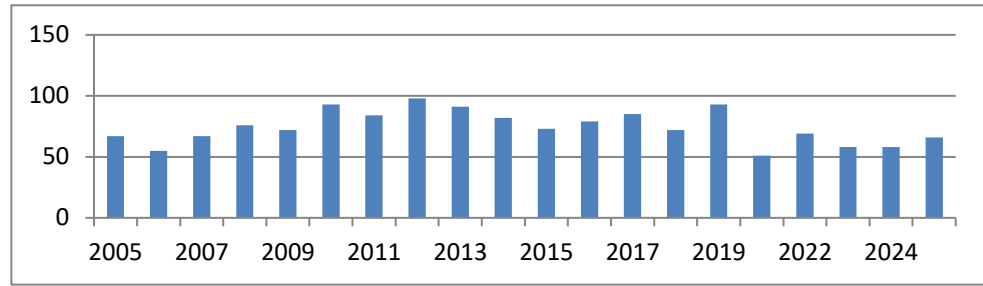
2001	479	473	50	10.6%
2002	483	476	59	12.4%
2003	485	485	52	10.7%
2004	489	478	48	10.0%
2005	438	426	59	13.8%
2006	406	395	51	12.9%
2007	338	302	34	11.3%
2008	453	444	50	11.3%
2009	521	494	53	10.7%
2010	688	525	88	16.8%
2011	463	394	36	9.1%
2012	386	338	52	15.4%
2013	457	360	54	15.0%
2014	436	406	49	12.1%
2015	369		56	
2016	402	318	45	14.2%

69 w/o state - weather caused reschd to same day as Bridge Run



Zoo Run for Wildlife 10K (1997-2001)	1998	3446	3256	174	5.3%
	1999	3704	3448	115	3.3%
	2000	3810	3574	98	2.7%

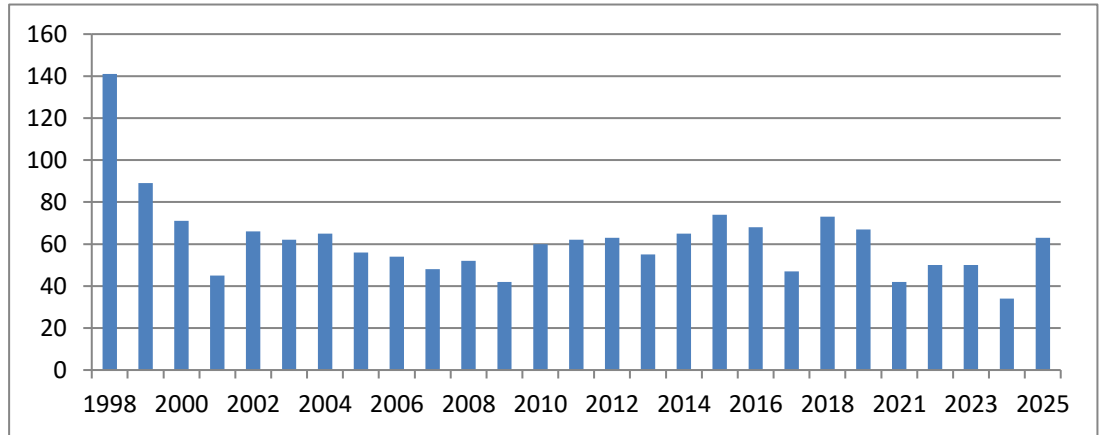
Ben Franklin Bridge 10K (since 2004)	2004	752	732	68	9.3%
	2005	1342	547	67	12.2%
	2006	1754	694	55	7.9%
	2007	2000	748	67	9.0%
Cooper Norcross Run The Bridge Event 10K	2008	2269	874	76	8.7%
	2009	2289	958	72	7.5%
	2010	3268	1448	93	6.4%
	2011	3030	1342	84	6.3%
	2012	3263	1383	98	7.1%
	2013	3401	1387	91	6.6%
	2014	2867	1207	82	6.8%
	2015	2269	906	73	8.1%
	2016	2652	1014	79	7.8%
	2017	2382	868	85	9.8%
	2018	2313	790	72	9.1%
	2019	2241	796	93	11.7%
	2021	1250	416	51	12.3%
	2022	1317	443	69	15.6%
	2023	1194	398	58	14.6%
	2024	1618	571	58	10.2%
	2025	1704	606	66	10.9%



see Bridge Run note above

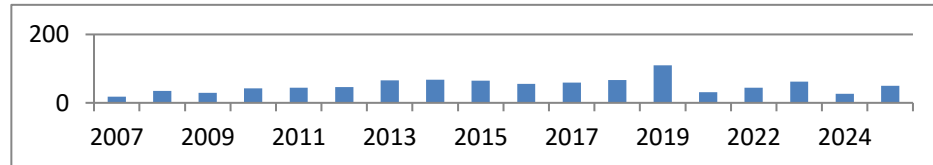
**Philadelphia
Marathon
(siince 1997)**

1998	3294	1361	141	10.4%
1999	3684	1512	89	5.9%
2000	4271	1839	71	3.9%
2001	3919	1751	45	2.6%
2002	4486	1884	66	3.5%
2003	5261	2169	62	2.9%
2004	6055	2311	65	2.8%
2005	5864	1975	56	2.8%
2006	5936	1920	54	2.8%
2007	6793	1852	48	2.6%
2008	7231	2331	52	2.2%
2009	7468	2269	42	1.9%
2010	8942	3187	60	1.9%
2011	10268	3633	62	1.7%
2012	11579	3580	63	1.8%
2013	10890	3983	55	1.4%
2014	10361	3618	65	1.8%
2015	9161	3312	74	2.2%
2016	8989	3219	68	2.1%
2017	7789	2911	47	1.6%
2018	9529	3236	73	2.3%
2019	10068	3432	67	2.0%
2021	7174	2561	42	1.6%
2022	8408	2799	50	1.8%
2023	11424	3768	50	1.3%
2024	12368	4072	34	0.8%
2025	12582	4609	63	1.4%



**Philadelphia
Half
Marathon
(since 2007)**

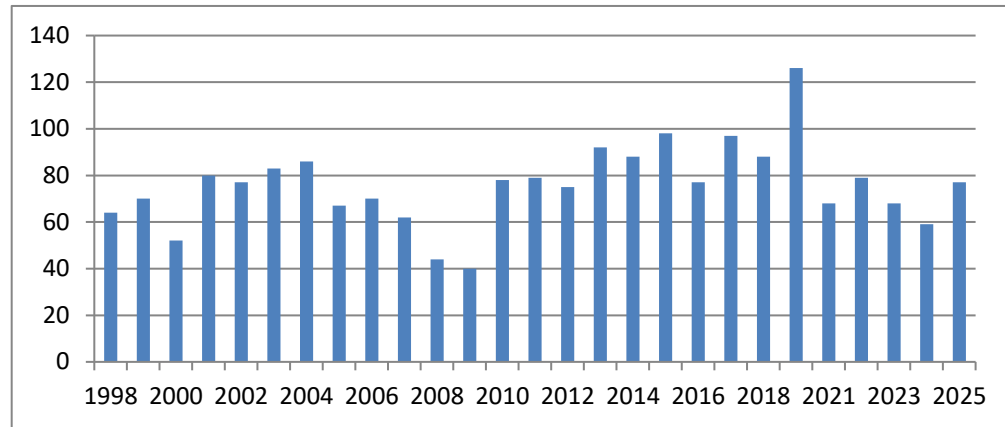
2007	4269	1709	18	1.1%
2008	5184	2117	35	1.7%
2009	7189	2965	29	1.0%
2010	8395	3963	42	1.1%
2011	9398	4625	44	1.0%
2012	10951	5469	46	0.8%
2013	12465	6372	66	1.0%
2014	12794	6495	68	1.0%
2015	10903	5517	65	1.2%
2016	10522	5788	55	1.0%
2017	10024	5820	59	1.0%
2018	10578	6080	67	1.1%
2019	11557	6432	110	1.7%
2021	7735	4214	31	0.7%



2022	10089	5387	44	0.8%
2023	12999	6926	62	0.9%
2024	11603	6231	26	0.4%
2025	11980	6397	50	0.8%

**Rothman
Institute 8K
(since 1997)**

1998	813	581	64	11.0%
1999	874	649	70	10.8%
2000	760	565	52	9.2%
2001	1059	811	80	9.9%
2002	1422	1069	77	7.2%
2003	1287	960	83	8.6%
2004	1342	941	86	9.1%
2005	1594	930	67	7.2%
2006	1443	872	70	8.0%
2007	1285	691	62	9.0%
2008	1444	753	44	5.8%
2009	1572	860	40	4.7%
2010	1648	1068	78	7.3%
2011	1491	953	79	8.3%
2012	1889	1240	75	6.0%
2013	1609	1064	92	8.6%
2014	1699	1180	88	7.5%
2015	1992	1281	98	7.7%
2016	2339	1521	77	5.1%
2017	2571	1644	97	5.9%
2018	3468	2233	88	3.9%
2019	4134	2557	126	4.9%
2021	2076	1253	68	5.4%
2022	3341	2026	79	3.9%
2023	3948	2205	68	3.1%
2024	3619	2087	59	2.8%
2025	3727	2303	77	3.3%



*Included southern NJ before 2005,
2005 & subsequent total includes NJ